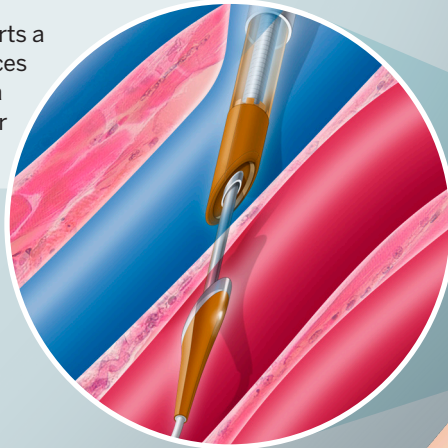


Ellipsys Vascular Access:

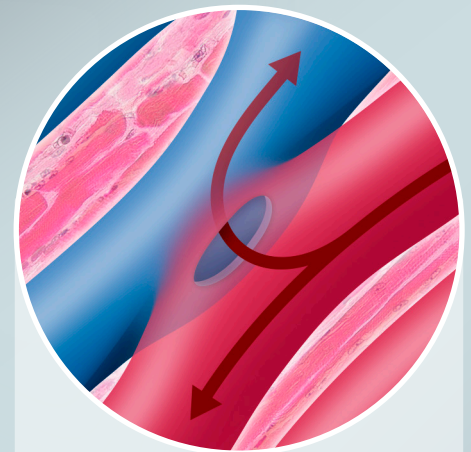
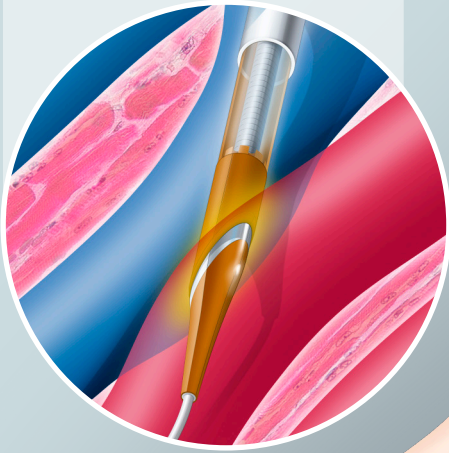
Faster, Less Invasive Access for Hemodialysis

For the nearly half-million U.S. patients who suffer kidney failure and require hemodialysis to survive, the new Ellipsys® procedure offers an easier way to access their bloodstream for treatment. This revolutionary procedure **replaces surgery with a needle stick** - no incisions, no scars and no lengthy recovery. **Quicker recovery means patients can begin their life-saving dialysis sooner.** Here's how it works.

1 Directed by ultrasound, a doctor inserts a small needle into the vein and advances it to an adjacent artery, then inserts a wire to introduce the Ellipsys catheter and guide it into place.



2 Once it's inside the artery, the catheter is closed and activated. This creates a permanent connection between the vein and artery.



3 The catheter is removed and blood begins to flow through the newly created "super vein" (also known as a fistula). No sutures or implant required.

4 The patient leaves with just a band aid and can return to normal activities the next day.

